

# ELECTRICAL REQUIREMENTS

DESIGNED NO.

YDS-8452-R

DATE

2018/12/14

ADAPTER 電氣特性要求

## 1. Electrical:

### 1-1. Input Characteristics:

#### 1-1-1. Rated Voltage

It is normal from 100 Vac to 240 Vac input AC voltage

#### 1-1-2. Input Voltage Range

The Adapter shall operate from 90 Vac to 264 Vac input AC voltage

#### 1-1-3. Rated Frequency

It is normal from 50 Hz to 60 Hz and single phase.

#### 1-1-4. Frequency Range

The Adapter shall operate with an input frequency from 47 Hz to 63 Hz .

#### 1-1-5. Steady AC Current

Maximum steady state input current is less than 0.8 Arms. Measured at 100Vac Input voltage.

#### 1-1-6. Inrush Current

At Full Load ,25°C , Cold Start

No Component Over Stress and No Fuse Blow No Damage To The Power Supply

#### 1-1-7. Minimum Average Efficiency In Active

The average efficiency must over 5V/81.84% , 9V/85.45%.12V/85.45% at 115Vac/230Vac input & 25%, 50%, 75% and 100% of Max. load (After 30 minutes operating, meet Energy Star Level VI)

#### 1-1-8. No load power ( Stand-by consumption )

The no load power is less than 0.1 W at 115 Vac and 230 Vac (Criteria : Level VI )

### 1-2. Output Characteristics:

Output Voltage	Minimum Voltage(V)	Maximum Voltage(V)	Output Current
			Continuous
+5Vdc	+4.85Vdc(in board)	+5.35Vdc	3A (15Watts)
+9Vdc	+8.1Vdc	+9.9Vdc	2A (18Watts)
+12Vdc	+10.8Vdc	+13.2Vdc	1.5A (18Watts)

The output mode of the product can be adjusted automatically by the load  
(输出电压可自动调整)

This Adapter capable to support 18 Watts continuously at all specified conditions.

### 1-2-7.Output Ripple and Noise

Ripple & Noise  $\leq$  240 mVp-p (Full load at I/P: 115 Vac 60 Hz and 230 Vac 50 Hz)

Measured methods:

Performed by 20MHz bandwidth in oscilloscope. Applied 0.1uF ceramic capacitor and 10uF electrolytic capacitor across output connector terminal. Measured at the end of DC cable.

Test temperature at 25°C.

### 1-2-8.Turn On Delay Time

3S Max. At 100Vac input and output Max Load

### 1-2-9.Hold Up Time

10mS Max. At 100Vac input and output Max Load

### 1-2-10.Protection

a) Short Circuit protection

The power supply will be auto recovered when short circuit faults remove

b) Over current protection ( OCP)

The power supply will be auto recovered when over current faults remove.

c) Over voltage protection ( OVP )

The voltage will not exceed the upper trip limit. Use for ZENER diode

Input Voltage	Output Voltage	Upper
100-240Vac	4.85Vdc~5.35Vdc(5.1V±5%)	/Vdc
100-240Vac	8.1Vdc~9.9Vdc	/Vdc
100-240Vac	10.8Vdc~13.2Vdc	/Vdc

## 2. Environmental:

### 2-1.Temperature

#### 2-1-1.Operating

The Adapter is capable to operate from 0 °C to. 40 °C

#### 2-1-2.Non- Operating

The Adapter is capable to be stored from -10 °C to. 60 °C

NOTE:The bending angle of SR part must not be exceed 90°

### 2-2.Humidity

#### 2-2-1.Operating

The Adapter is capable to operate from 10 to 90 % RH. ( non condensing)

#### 2-2-2.Non- Operating

The Adapter is capable to be stored from 5 to 95 % RH. ( non condensing)

2-3.Dielectric Withstand Voltage ( HI – POT )

The Adapter shall be applied 3000 Vac for 60 seconds or 4242 Vdc for 60 seconds between AC input terminals and output terminals. The cut off current is specified  $\leq$  10 mA.

2-4.Insulation Resistance

Primary to secondary :  $\geq$  50 M ohm. 500 VDC.

2-5.EMI Requirement

The adapter complies with :

<input type="checkbox"/>	FCC Part 15 Class B	<input checked="" type="checkbox"/>	EN55032 Class B	<input type="checkbox"/>	J55022 Class B
<input type="checkbox"/>	AS/NES 3548 Class B	<input type="checkbox"/>	CNS13438 Class B	<input type="checkbox"/>	ICES-003 Class I
<input type="checkbox"/>	GB9254 Class B	<input checked="" type="checkbox"/>	EN55024 Class B		

2-6.EMS

ESD :  $\pm$  8 KV air discharge,  $\pm$  4 KV contact discharge

PLD ( lightning surge IEC 61000-4-5 )

(1) Common Mode +/-          KV ( 12 ohm ) . Class I (line to earth , neutral to earth , line to neutral)

(2) Differential Mode +/- 1 KV ( 2 ohm ) . Class II (line to neutral)

2-7.Safety Conforming

Type	Standard
UL	UL60950-1
UL	UL1310
cUL	CSA 22.2 No.60950
cUL	CAN/CSA C22.2 No.223
GS	EN60950-1
PSE	J60950-1
BSMI	CNS14336-1
GS	EN60065:2002+A1:2006

Type	Standard
CE	IEC60065
CB	IEC60950-1
SAA	AS/NZS: 60950-1
CCC	GB4943
<input checked="" type="checkbox"/> CE	EN60950-1
KETI	K 60950-1
CB	IEC60065
PSB	IEC60950-1

3. Mechanical:

3-1.Dimension

Body: 48 mm (L)  $\times$  28 mm (W)  $\times$  50 mm (H) reference only Detail Refer Page 9 ).

3-2.Output Cord

Plug: PIN1:OUT+,PIN4:OUT-,PIN2:D-,PIN3:D+

Wire: N/A

3-3.Weight

Net Weight (Approx): 69,080  $\pm$ 5% mg.

3-4.AC Plug

VDE Type.

# NAMEPLATE

← 27.5+0/-0.2 →

SWITCHING ADAPTER  
 Model No: AMS216-0503000FV  
 Input: 100-240V~50/60Hz 0.8A  
 Output: 5 V ≡ 3.0 A / 9 V ≡ 2.0 A  
 12 V ≡ 1.5 A



↑ 33.5+0/-0.2 ↓

二維碼內容：188S0000001

年兩碼 月一碼 製造代碼 流水號七碼

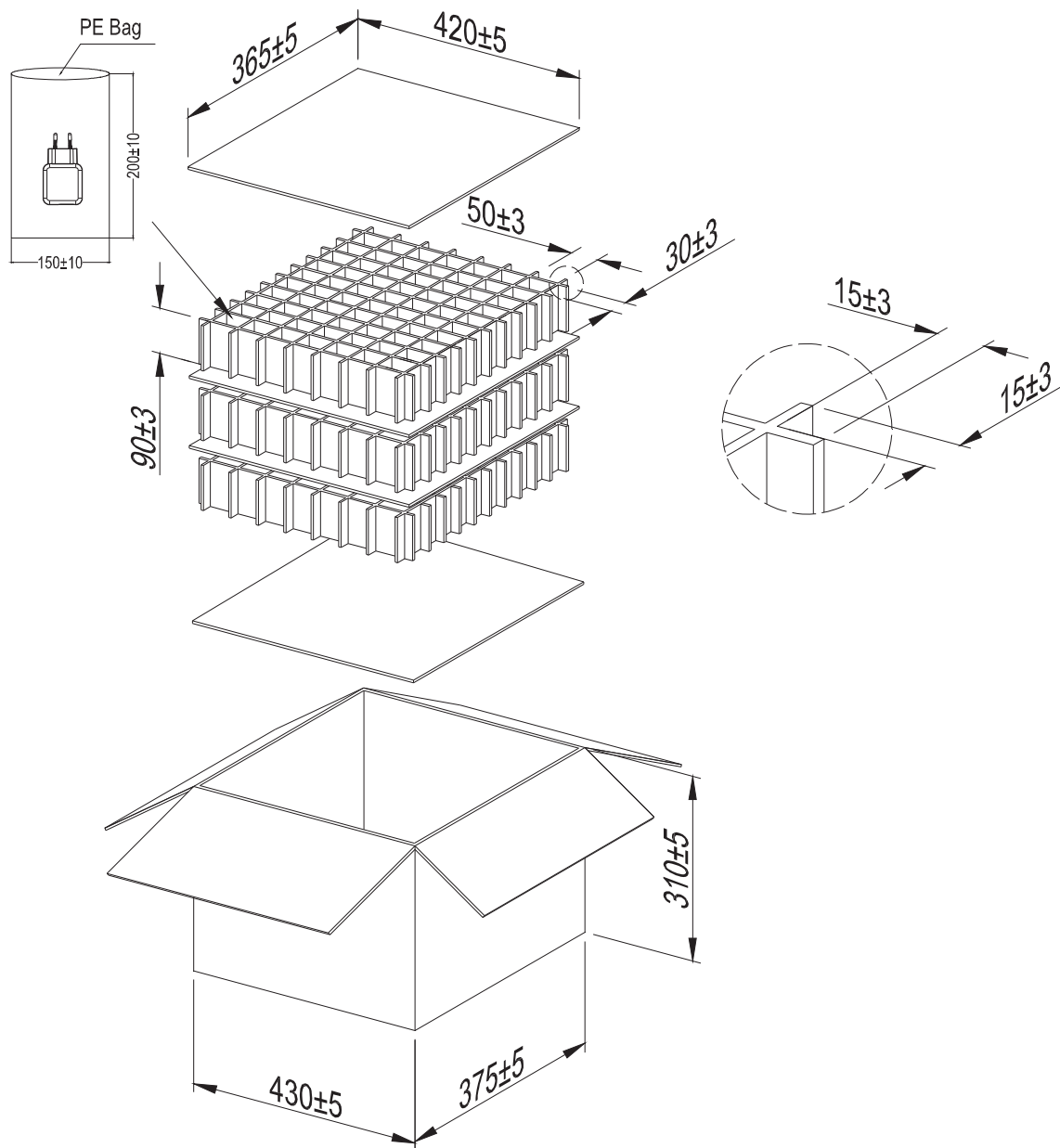
說明：

月份	1	2	3	4	5	6	7	8	9	10	11	12
月一碼	1	2	3	4	5	6	7	8	9	X	N	D

	S	Y
製造代碼	樣品	產品

DESIGNED NO.	YDS-8452-R			
MATERIAL	雷雕銘板/陰雕銘板	To creating new drawing SPEC.	2018/12/14	吳翠萍
UNIT	mm	DESCRIPTION	DATE	REVISER

# PACKING

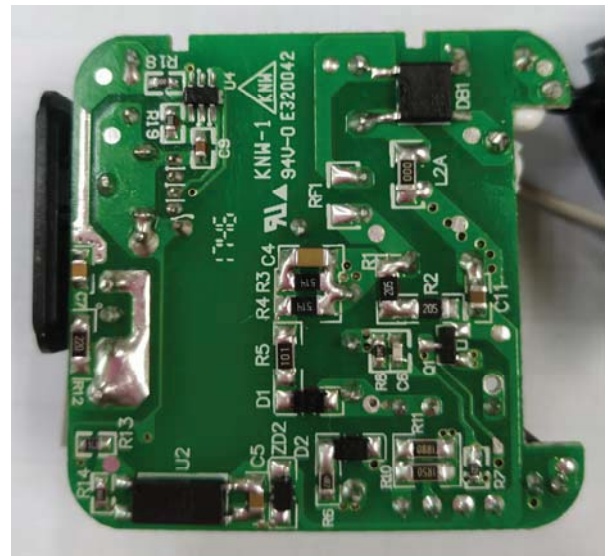


注：

1. 外箱尺寸：430\*375\*310；
2. 隔板尺寸：420\*365，共4塊；
3. 井字格：7\*10格，共3層；
4. 一層裝70PCS，共3層，一箱裝210PCS；
5. PE袋：200\*150
5. 單位：mm

DESIGNED NO.	YDS-8452-R			
COLOR	----			
MATERIAL	----	To creating new drawing SPEC.	2018/12/14	吳翠萍
UNIT	mm	DESCRIPTION	DATE	REVISER

# PHOTO



DESIGNED NO.	YDS-8452-R			
COLOR	——			
MATERIAL	——	To creating new drawing SPEC.	2018/12/14	吴翠萍
UNIT	——	DESCRIPTION	DATE	REVISER