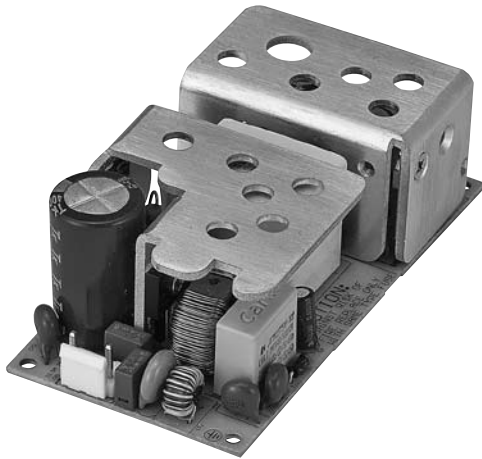


EP1065 Series



Features

- High Efficiency
- RoHS Compliance
- Over Voltage Protective Installation
- Over Current Protective Installation
- Short Circuit Protective Installation
- 100% Burn-In
- 100% Hi-Pot Tested
- MTBF > 30,000 hours

EP V WWW XX Y Z

- V:** The number of output group
www: Total Power
XX: Main - Power
Y: Secondary voltage coding
Z: Serial number

Electrical Specifications

| MODEL No. | OUTPUT POWER (W) | OUTPUT VOLTAGE (Vdc) | LOAD | | LOAD REGULATION | RIPPLE & NOISE |
|---------------|------------------|----------------------|----------------------------|----------|-----------------|----------------|
| | | | MIN. (IO) | MAX. (I) | | |
| Single Output | EP1065XYZ | 65W | 12, 15, 19, 24, 36, 48V | | ± 3% Max. | ± 2% Max. |
| | EP1060XYZ | 60W | 12, 15, 19, 24, 36, 48V | | ± 3% Max. | ± 2% Max. |
| | EP1050XYZ | 50W | 5, 12, 15, 19, 24, 36, 48V | | ± 3% Max. | ± 2% Max. |
| | EP1045XYZ | 45W | 5, 12, 15, 19, 24, 36, 48V | | ± 3% Max. | ± 2% Max. |
| | EP1040XYZ | 40W | 5, 12, 15, 19, 24, 36, 48V | | ± 3% Max. | ± 2% Max. |
| Dual Output | EP2WWWXYZ | 30~65W | 12, 15, 19, 24V | | ± 5% Max. | ± 2% Max. |
| | | | 5V | | ± 5% Max. | ± 2% Max. |
| Triple Output | EP3WWWXYZ | 45~65W | 12, 24V | | ± 5% Max. | ± 2% Max. |
| | | | 5V | | ± 5% Max. | ± 2% Max. |
| | | | -12V | | ± 5% Max. | ± 2% Max. |

NOTE:

- 1 : Ripple & Noise is measured by using 20MHz bandwidth limited oscilloscope and terminated each output with a 0.1uF ceramic capacitor & parallel with 47uF aluminum capacitor at full load and nominal line.
- 2 : Line regulation is defined by changing ±10% of input voltage from nominal line at rated load.
- 3 : Max. Power (W) ≥Vo x Io

Electrical Specifications

INPUT

- Input Range 90 -264Vac
- Input Current ≤1.5A
- Inrush Current ≤120A at 220V ac At cold start maximum load
- Efficiency 80%~88% depends on models.
Meet CEC Level V.
- Turn On Time ≤3s

OUTPUT

- Over Voltage Protection Latch off or Auto Recovery
- Short Circuit Protection Auto Recovery
- Over Current Protection Auto Recovery

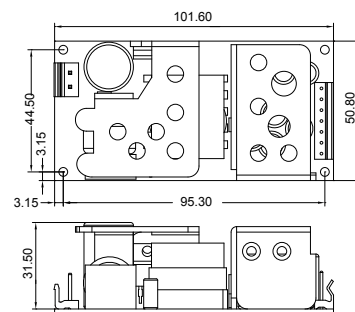
ENVIRONMENTAL

- Operating Temperature 0 to 50°C
- Storage Temperature -20 to 85°C
- Storage Humidity 5% to 95 %

SAFETY

- UL/CUL, TUV, CB, CE, FCC

Mechanical Specification



- Mechanical Size: 101.6 X 50.8 X 37 (mm)
- AC Input Connector: Molex 09-65-2048 or equivalent
- DC Output Connector: JST VH Series or equivalent
- Pin Assignment:

| | | | | |
|---------------|------|-------|------------|--------|
| Single Output | P1-3 | P4-6 | P7 | |
| | GND | 5~48V | 5V(option) | |
| Multi Output | P1 | P2-3 | P4-5 | P6-7 |
| | -12V | 5V | GND | 12~24V |

- Weight: 200g

E P V WWW XX Y Z

| E | P | V | WWW | XX | Y | Z |
|----------|------------|---------------|---------------------------|--|--|--|
| BUSINESS | TYPE | OUTPUT NUMBER | TOTAL POWER | MAIN - POWER | 0~9~A~Z | 0~9~A~Z |
| EDAC | Open Frame | 1 2 3 | 030 050 040 065 045 | 05=5V 24=24V 12=12V 36=36V 15=15V 48=48V 19=19V | 0 = NA D = 5V(0.5A) E = 5V(2A~4A) T = 5V+(- 12V/0.3A) | 0=NA 2= 5V/2A 3= 5V/3A 4= 5V/4A |

| MODEL NAME | MAIN - POWER | | | 5V/0.5A- POWER | | | 5V/2~4A POWER | | | -12V POWER | | | TOTAL POWER |
|---------------|--------------|--------|--------|----------------|--------|--------|---------------|--------|--------|------------|--------|--------|-------------|
| | Vo1(V) | Io1(I) | Wo1(W) | Vo2(V) | Io2(I) | Wo2(W) | Vo2(V) | Io2(I) | Wo2(W) | Vo3(V) | Io3(I) | Wo3(W) | |
| Single output | EP10651200 | 12 | 5.41 | 65 | | | | | | | | | 65 |
| | EP10651500 | 15 | 4.33 | 65 | | | | | | | | | 65 |
| | EP10651900 | 19 | 3.42 | 65 | | | | | | | | | 65 |
| | EP10652400 | 24 | 2.70 | 65 | | | | | | | | | 65 |
| | EP10653600 | 36 | 1.80 | 65 | | | | | | | | | 65 |
| | EP10654800 | 48 | 1.35 | 65 | | | | | | | | | 65 |
| | EP10601200 | 12 | 5.00 | 60 | | | | | | | | | 60 |
| | EP10601500 | 15 | 4.00 | 60 | | | | | | | | | 60 |
| | EP10601900 | 19 | 3.15 | 60 | | | | | | | | | 60 |
| | EP10602400 | 24 | 2.50 | 60 | | | | | | | | | 60 |
| | EP10603600 | 36 | 1.66 | 60 | | | | | | | | | 60 |
| | EP10604800 | 48 | 1.25 | 60 | | | | | | | | | 60 |
| | EP10500500 | 5 | 10.00 | 50 | | | | | | | | | 50 |
| | EP10501200 | 12 | 4.16 | 50 | | | | | | | | | 50 |
| | EP10501500 | 15 | 3.33 | 50 | | | | | | | | | 50 |
| | EP10501900 | 19 | 2.63 | 50 | | | | | | | | | 50 |
| | EP10502400 | 24 | 2.08 | 50 | | | | | | | | | 50 |
| | EP10503600 | 36 | 1.38 | 50 | | | | | | | | | 50 |
| | EP10504800 | 48 | 1.04 | 50 | | | | | | | | | 50 |
| | EP10450500 | 5 | 9.00 | 45 | | | | | | | | | 45 |
| | EP10451200 | 12 | 3.75 | 45 | | | | | | | | | 45 |
| | EP10451500 | 15 | 3.00 | 45 | | | | | | | | | 45 |
| | EP10451900 | 19 | 2.36 | 45 | | | | | | | | | 45 |
| | EP10452400 | 24 | 1.87 | 45 | | | | | | | | | 45 |
| | EP10453600 | 36 | 1.25 | 45 | | | | | | | | | 45 |
| | EP10454800 | 48 | 0.93 | 45 | | | | | | | | | 45 |
| | EP10400500 | 5 | 8.00 | 40 | | | | | | | | | 40 |
| | EP10401200 | 12 | 3.33 | 40 | | | | | | | | | 40 |
| | EP10401500 | 15 | 2.66 | 40 | | | | | | | | | 40 |
| | EP10401900 | 19 | 2.10 | 40 | | | | | | | | | 40 |
| EP10402400 | 24 | 1.66 | 40 | | | | | | | | | 40 | |
| EP10403600 | 36 | 1.11 | 40 | | | | | | | | | 40 | |
| EP10404800 | 48 | 0.83 | 40 | | | | | | | | | 40 | |
| EP10300500 | 5 | 6.00 | 30 | | | | | | | | | 30 | |
| EP10301200 | 12 | 2.50 | 30 | | | | | | | | | 30 | |
| EP10301500 | 15 | 2.00 | 30 | | | | | | | | | 30 | |
| EP10301900 | 19 | 1.57 | 30 | | | | | | | | | 30 | |
| EP10302400 | 24 | 1.25 | 30 | | | | | | | | | 30 | |

| MODEL NAME | MAIN - POWER | | | 5V/0.5A- POWER | | | 5V/2~4A POWER | | | -12V POWER | | | TOTAL POWER |
|------------|--------------|--------|--------|----------------|--------|--------|---------------|--------|--------|------------|--------|--------|-------------|
| | Vo1(V) | Io1(I) | Wo1(W) | Vo2(V) | Io2(I) | Wo2(W) | Vo2(V) | Io2(I) | Wo2(W) | Vo3(V) | IO3(I) | Wo3(W) | |
| EP206512D0 | 12 | 5.20 | 62.5 | 5 | 0.5 | 2.5 | | | | | | | 65 |
| EP206515D0 | 15 | 4.16 | 62.5 | 5 | 0.5 | 2.5 | | | | | | | 65 |
| EP206519D0 | 19 | 3.28 | 62.5 | 5 | 0.5 | 2.5 | | | | | | | 65 |
| EP206524D0 | 24 | 2.60 | 62.5 | 5 | 0.5 | 2.5 | | | | | | | 65 |
| EP206512E3 | 12 | 4.16 | 50 | | | | 5 | 3 | 15 | | | | 65 |
| EP206524E3 | 24 | 2.08 | 50 | | | | 5 | 3 | 15 | | | | 65 |
| EP206512E4 | 12 | 3.75 | 45 | | | | 5 | 4 | 20 | | | | 65 |
| EP206524E4 | 24 | 1.87 | 45 | | | | 5 | 4 | 20 | | | | 65 |
| EP205012D0 | 12 | 3.95 | 47.5 | 5 | 0.5 | 2.5 | | | | | | | 50 |
| EP205015D0 | 15 | 3.16 | 47.5 | 5 | 0.5 | 2.5 | | | | | | | 50 |
| EP205019D0 | 19 | 2.50 | 47.5 | 5 | 0.5 | 2.5 | | | | | | | 50 |
| EP205024D0 | 24 | 1.97 | 47.5 | 5 | 0.5 | 2.5 | | | | | | | 50 |
| EP205012E3 | 12 | 2.91 | 35 | | | | 5 | 3 | 15 | | | | 50 |
| EP205024E3 | 24 | 1.45 | 35 | | | | 5 | 3 | 15 | | | | 50 |
| EP205012E4 | 12 | 2.50 | 30 | | | | 5 | 4 | 20 | | | | 50 |
| EP205024E4 | 24 | 1.25 | 30 | | | | 5 | 4 | 20 | | | | 50 |
| EP204512D0 | 12 | 3.54 | 42.5 | 5 | 0.5 | 2.5 | | | | | | | 45 |
| EP204515D0 | 15 | 2.83 | 42.5 | 5 | 0.5 | 2.5 | | | | | | | 45 |
| EP204519D0 | 19 | 2.23 | 42.5 | 5 | 0.5 | 2.5 | | | | | | | 45 |
| EP204524D0 | 24 | 1.77 | 42.5 | 5 | 0.5 | 2.5 | | | | | | | 45 |
| EP204512E2 | 12 | 2.91 | 35 | | | | 5 | 2 | 10 | | | | 45 |
| EP204524E2 | 24 | 1.45 | 35 | | | | 5 | 2 | 10 | | | | 45 |
| EP204512E3 | 12 | 2.50 | 30 | | | | 5 | 3 | 15 | | | | 45 |
| EP204524E3 | 24 | 1.25 | 30 | | | | 5 | 3 | 15 | | | | 45 |
| EP204012D0 | 12 | 3.12 | 37.5 | 5 | 0.5 | 2.5 | | | | | | | 40 |
| EP204015D0 | 15 | 2.50 | 37.5 | 5 | 0.5 | 2.5 | | | | | | | 40 |
| EP204019D0 | 19 | 1.97 | 37.5 | 5 | 0.5 | 2.5 | | | | | | | 40 |
| EP204024D0 | 24 | 1.56 | 37.5 | 5 | 0.5 | 2.5 | | | | | | | 40 |
| EP204012E2 | 12 | 2.50 | 30 | | | | 5 | 2 | 10 | | | | 40 |
| EP204024E2 | 24 | 1.25 | 30 | | | | 5 | 2 | 10 | | | | 40 |
| EP204012E3 | 12 | 2.08 | 25 | | | | 5 | 3 | 15 | | | | 40 |
| EP204024E3 | 24 | 1.04 | 25 | | | | 5 | 3 | 15 | | | | 40 |
| EP203012D0 | 12 | 2.29 | 27.5 | 5 | 0.5 | 2.5 | | | | | | | 30 |
| EP203015D0 | 15 | 1.83 | 27.5 | 5 | 0.5 | 2.5 | | | | | | | 30 |
| EP203019D0 | 19 | 1.44 | 27.5 | 5 | 0.5 | 2.5 | | | | | | | 30 |
| EP203024D0 | 24 | 1.14 | 27.5 | 5 | 0.5 | 2.5 | | | | | | | 30 |
| EP203012E2 | 12 | 1.66 | 20 | | | | 5 | 2 | 10 | | | | 30 |
| EP203024E2 | 24 | 0.83 | 20 | | | | 5 | 2 | 10 | | | | 30 |
| EP306512T3 | 12 | 3.86 | 46.4 | | | | 5 | 3 | 15 | -12 | 0.3 | 3.6 | 65 |
| EP306512T4 | 12 | 3.45 | 41.4 | | | | 5 | 4 | 20 | -12 | 0.3 | 3.6 | 65 |
| EP305012T3 | 12 | 2.61 | 31.4 | | | | 5 | 3 | 15 | -12 | 0.3 | 3.6 | 50 |
| EP305012T4 | 12 | 2.20 | 26.4 | | | | 5 | 4 | 20 | -12 | 0.3 | 3.6 | 50 |
| EP304512T2 | 12 | 2.61 | 31.4 | | | | 5 | 2 | 10 | -12 | 0.3 | 3.6 | 45 |
| EP304512T3 | 12 | 2.20 | 26.4 | | | | 5 | 3 | 15 | -12 | 0.3 | 3.6 | 45 |
| EP306524T3 | 24 | 1.93 | 46.4 | | | | 5 | 3 | 15 | -12 | 0.3 | 3.6 | 65 |
| EP306524T4 | 24 | 1.72 | 41.4 | | | | 5 | 4 | 20 | -12 | 0.3 | 3.6 | 65 |
| EP305024T3 | 24 | 1.30 | 31.4 | | | | 5 | 3 | 15 | -12 | 0.3 | 3.6 | 50 |
| EP305024T4 | 24 | 1.10 | 26.4 | | | | 5 | 4 | 20 | -12 | 0.3 | 3.6 | 50 |
| EP304524T2 | 24 | 1.30 | 31.4 | | | | 5 | 2 | 10 | -12 | 0.3 | 3.6 | 45 |
| EP304524T3 | 24 | 1.10 | 26.4 | | | | 5 | 3 | 15 | -12 | 0.3 | 3.6 | 45 |