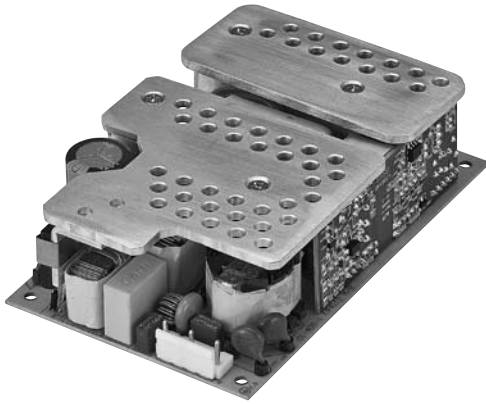


EPM1120 Series



Features

- High Efficiency
- RoHS Compliance
- Over Voltage Protective Installation
- Over Current Protective Installation
- Short Circuit Protective Installation
- 100% Burn-In
- 100% Hi-Pot Tested
- MTBF > 30,000 hours

EPM V WWW XX Y Z

- V:** The number of output group
WWW: Total Power
XX: Main Power voltage
Y: Secondary voltage coding
Z: Serial number

Electrical Specifications

MODEL NO.		OUTPUT POWER (W)	OUTPUT NO.	OUTPUT VOLTAGE (Vdc)	OUTPUT LOAD (A)	LOAD REGULATION	RIPPLE & NOISE
Single output	EPM1WWWXXYZ	80~120W	Main Power	5,12,18,19,24,36,48V	2.5~16A	± 3% Max.	2% Max.
Dual output	EPM2WWWXXYZ	86~110W	Main Power	5,12,19,24,36,48V	2.08~16A	± 3% Max.	2% Max.
			Stand-by or -12V	5Vsb or -12V	0.5~2A	± 3 or 10% Max.	2% Max.
Triple output	EPM3WWWXXYZ	90~110W	Main Power	5, 12, 19, 24, 36, 48V	1.96~14.8A	± 3% Max.	2% Max.
			Stand-by Power	5Vsb	2A	± 3% Max.	2% Max.
			DC-DC or -12V	5,12V or -12V	0.5~3A	± 3 or 10% Max.	2% Max.
Quad output	EPM4WWWXXYZ	110W	Main Power	12,19,24V	2.42~7A	± 3% Max.	2% Max.
			DC - DC Power	5,12V	2~3A	± 3% Max.	2% Max.
			-12V Power	-12V	0.5A	± 10% Max.	2% Max.
			Stand-by Power	5Vsb	2A	± 3% Max.	2% Max.

NOTE:

- 1 : Ripple & Noise is measured by using 20MHz bandwidth limited oscilloscope and terminated each output with a 0.1uF ceramic capacitor & parallel with 47uF aluminum capacitor at full load and nominal line.
- 2 : Line regulation is defined by changing ±10% of input voltage from nominal line at rated load.
- 3 : Max. Power (W) ≥Vo x Io

Electrical Specifications

INPUT

- Input Range 90 -264Vac
- Input Current ≤2.5A
- Inrush Current ≤120A peak @220VAC,cold start@25°C
- Efficiency ≤80 ~ 87% depends on models.
- Turn On Time ≤3s

OUTPUT

- Over Voltage Protection Latch off or Auto Recovery
- Short Circuit Protection Latch off or Auto Recovery
- Over Current Protection Latch off or Auto Recovery

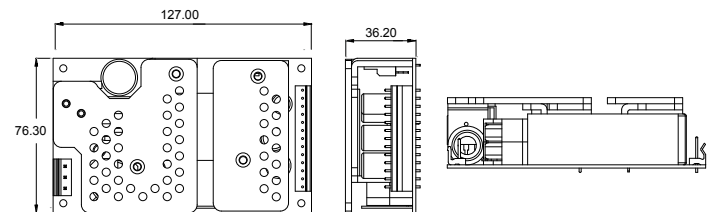
ENVIRONMENTAL

- Operating Temperature 0 to 50°C
- Storage Temperature -20 to 85°C
- Storage Humidity 5% to 95 %

SAFETY

- UL/CUL, TUV, CB, FCC

Mechanical Specification



- Mechanical Size: 127.0 X76.3 X 36.2 (mm)
- AC Input Connector: JST/B5P-VH Series or equivalent
- DC Output Connector P2 : JST/B13P-VH Series or equivalent
- DC Output Connector PS3 : Goldenconn/BB2009W4HT Series or equivalent
- Pin Assignment:

P1-4	P5-8,10,13	P9	P11	P12
Main power	GND	-12V Power	Vout2	Stand-by Power

PS3 :

P1	P2	P3	P4
Reset	PS/ON	GND	PG

- Weight: 450g

Open Frame Medical Type

• 80~120Watts Max.
Single Output/Dual Output/
Triple Output/Quad Output

E PM V WWW XX Y Z

E	PM	V	WWW	XX	Y	Z	
BUSINESS	TYPE	NUMBER OF OUTPUT GROUP	TOTAL POWER	MAIN - POWER		0~9~A~Z	0~9~A~Z
EDAC	Medical Open Frame	1~4	080~120	05=5V 12=12V 18=18V 19=19V	24=24V 36=36V 48=48V	0=NA A= Stand by B = - 12V C=Standby+(- 12V)	0=NA A= 5V/2A B =5V/3A C= 12V/2A D=12V/3A

MODEL NAME	MAIN- POWER			STAND BY- POWER			-12V POWER			DC TO DC POWER			TOTAL POWER	
	Vo1(V)	Io1(I)	Wo1(W)	Vo2(V)	Io2(I)	Wo2(W)	Vo3(V)	Io3(I)	Wo3(W)	Vo4(V)	Io4(I)	Wo4(W)		
Single output	EPM10800500	5	16.00	80									80	
	EPM11001200	12	8.33	100									100	
	EPM10801800	18	4.44	80									80	
	EPM10901800	18	5.00	90									90	
	EPM11001800	18	5.56	100									100	
	EPM11101800	18	6.11	110									110	
	EPM11001900	19	5.26	100									100	
	EPM11201900	19	6.32	120									120	
	EPM11002400	24	4.17	100									100	
	EPM11202400	24	5.00	120									120	
	EPM11003600	36	2.78	100									100	
	EPM11203600	36	3.33	120									120	
EPM11004800	48	2.08	100									100		
EPM11204800	48	2.50	120									120		
Dual output	EPM209005A0	5	16.00	80	5	2	10						90	
	EPM211012A0	12	8.33	100	5	2	10						110	
	EPM211019A0	19	5.26	100	5	2	10						110	
	EPM211024A0	24	4.17	100	5	2	10						110	
	EPM211036A0	36	2.78	100	5	2	10						110	
	EPM211048A0	48	2.08	100	5	2	10						110	
	EPM208605B0	5	16.00	80				-12	0.5	6			86	
	EPM210612B0	12	8.33	100				-12	0.5	6			106	
	EPM211019B0	19	5.47	104				-12	0.5	6			110	
	EPM211024B0	24	4.33	104				-12	0.5	6			110	
EPM211036B0	36	2.89	104				-12	0.5	6			110		
EPM211048B0	48	2.17	104				-12	0.5	6			110		
Triple output	EPM309005C0	5	14.80	74	5	2	10	-12	0.5	6			90	
	EPM311012C0	12	7.83	94	5	2	10	-12	0.5	6			110	
	EPM311019C0	19	4.95	94	5	2	10	-12	0.5	6			110	
	EPM311024C0	24	3.92	94	5	2	10	-12	0.5	6			110	
	EPM311036C0	36	2.61	94	5	2	10	-12	0.5	6			110	
	EPM311048C0	48	1.96	94	5	2	10	-12	0.5	6			110	
	EPM311012AA	12	7.50	90	5	2	10				5	2	10	110
	EPM311012AB	12	7.08	85	5	2	10				5	3	15	110
	EPM311019AA	19	4.74	90	5	2	10				5	2	10	110
	EPM311019AB	19	4.47	85	5	2	10				5	3	15	110
	EPM311019AC	19	4.00	76	5	2	10				12	2	24	110
	EPM311019AD	19	3.37	64	5	2	10				12	3	36	110
	EPM311024AA	24	3.75	90	5	2	10				5	2	10	110
	EPM311024AB	24	3.54	85	5	2	10				5	3	15	110
EPM311024AC	24	3.17	76	5	2	10				12	2	24	110	
EPM311024AD	24	2.67	64	5	2	10				12	3	36	110	
Quad output	EPM411012CA	12	7.00	84	5	2	10	-12	0.5	6	5	2	10	110
	EPM411012CB	12	6.58	79	5	2	10	-12	0.5	6	5	3	15	110
	EPM411019CA	19	4.42	84	5	2	10	-12	0.5	6	5	2	10	110
	EPM411019CB	19	4.16	79	5	2	10	-12	0.5	6	5	3	15	110
	EPM411019CC	19	3.68	70	5	2	10	-12	0.5	6	12	2	24	110
	EPM411019CD	19	3.05	58	5	2	10	-12	0.5	6	12	3	36	110
	EPM411024CA	24	3.50	84	5	2	10	-12	0.5	6	5	2	10	110
	EPM411024CB	24	3.29	79	5	2	10	-12	0.5	6	5	3	15	110
EPM411024CC	24	2.92	70	5	2	10	-12	0.5	6	12	2	24	110	
EPM411024CD	24	2.42	58	5	2	10	-12	0.5	6	12	3	36	110	